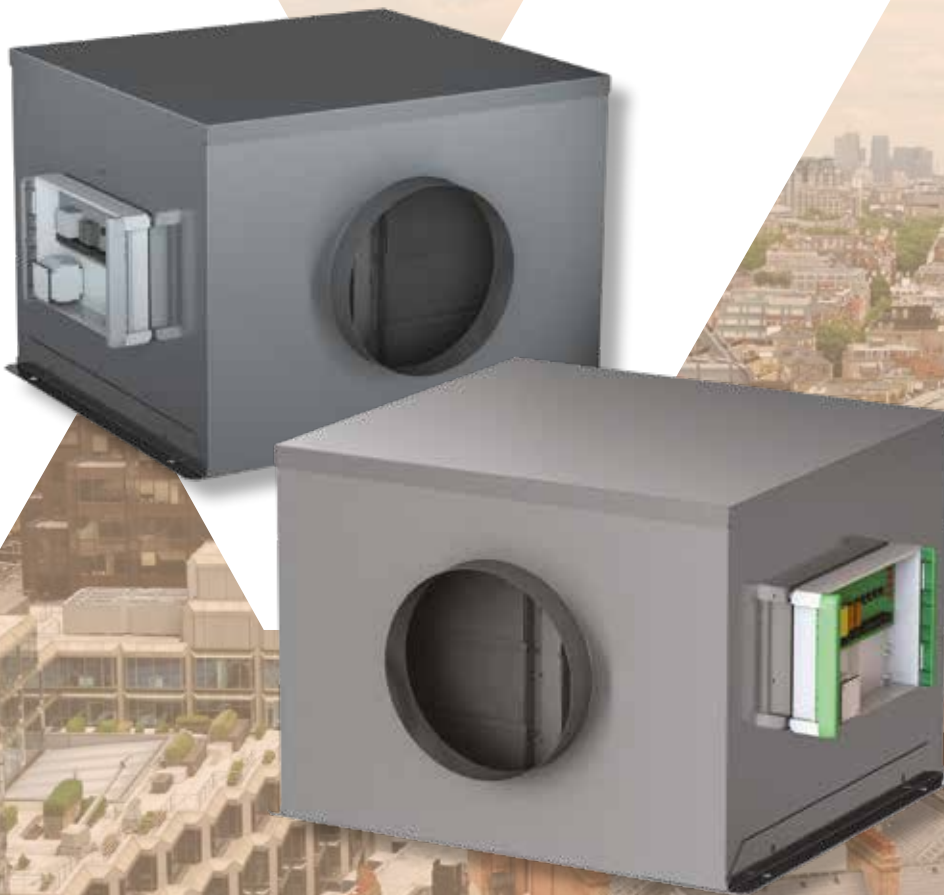
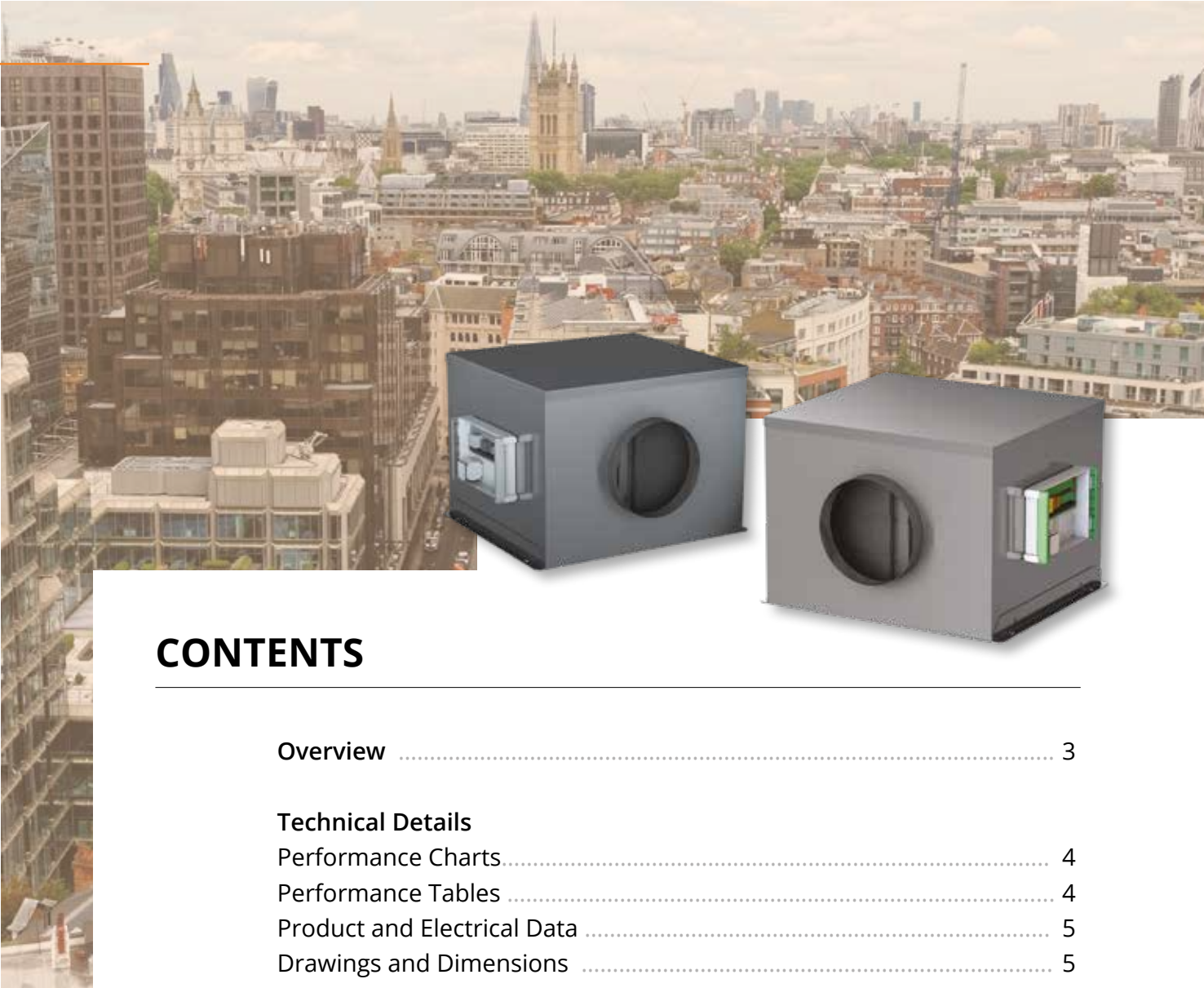


WOODS BOX FANS EC TWIN





CONTENTS

| | |
|-----------------------------------|---|
| Overview | 3 |
| Technical Details | |
| Performance Charts | 4 |
| Performance Tables | 4 |
| Product and Electrical Data | 5 |
| Drawings and Dimensions | 5 |
| Wiring Diagrams | 6 |

OVERVIEW

PRODUCT FACTS

- EC Motors
- Suitable for internal & external as standard
- Plug & play fitted control panel
- Low breakout noise levels
- Low SFP to help achieve L2 regulations
- Compact design
- As standard supplied with TOP access
- ErP Compliant
- Auto Changeover Panel IP65

ELECTRICAL SUPPLY

220-240V / 50Hz / 1Ph

380-420V / 50Hz / 3Ph (450 and 560 size only)

SIZES

150, 200, 250, 315, 350, 450 & 560 mm

CONSTRUCTION

Casings is manufactured from galvanised steel 0.99mm to 1.2mm thick depending on the model.

Standard construction suitable for internal & external mounting, however, powder coated upon request.

Bottom access option is available upon request.

MOUNTING

Suitable for mounting in horizontal applications.

IMPELLER

Impellers high efficiency backward curved centrifugal impeller design.

MOTOR

This product is fitted with EC motors to optimise energy savings and can be controlled via a 0-10V signal providing highest degree of controllability.

AUTO CHANGEOVER PANEL

The fans are fitted with plug and play control unit designed to work with BMS systems as:

- Volt free contact BMS enable
- Volt free contact BMS boost
- BMS fan fault signal
- 0-10 Volt speed control inputs
- Adjustable duty share
- Run on Timer (0-20 minutes)
- Trickle and boost
- PIR enabled boost function

ACCESSORIES - CONTROLLERS

The range of accessories include duct clamps and silencers. A quick reference guide is shown below.



CFC



BDER

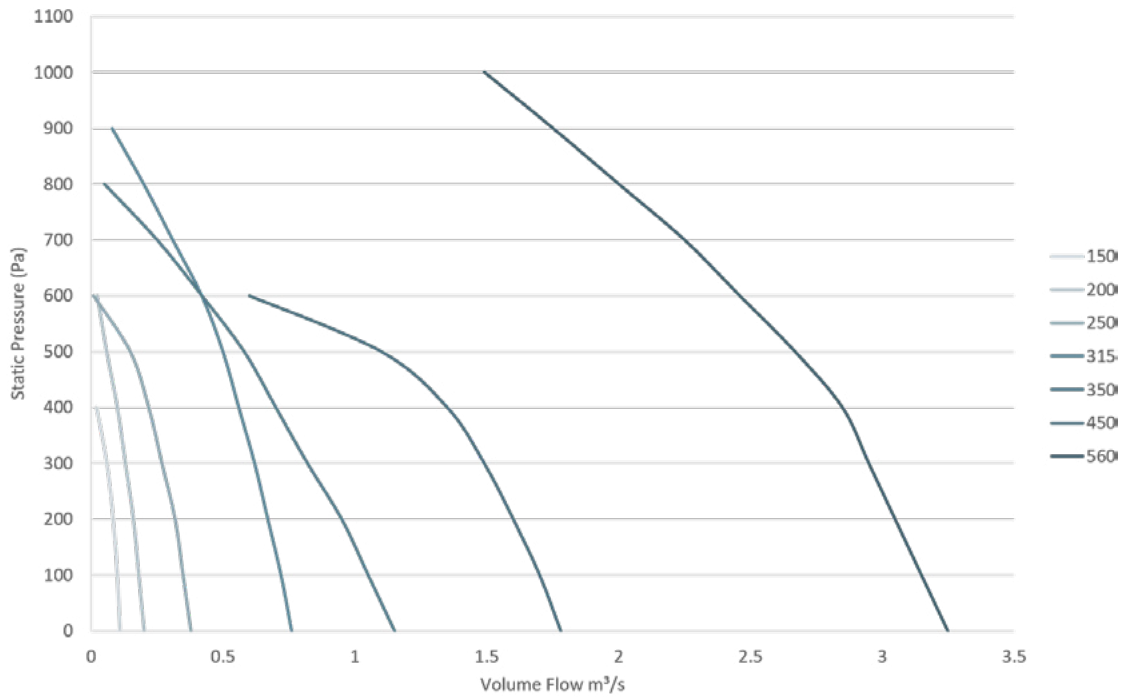


0-10V Pot



PIR

Performance Charts



Performance Tables

| Product Code | M3/s @ Pa (Static) | | | | | | | | | | | | | | | | |
|-----------------------|--------------------|------|------|------|------|------|------|------|------|------|-------|-------|------|------|-------|------|------|
| | 0 | 100 | 150 | 200 | 250 | 300 | 350 | 400 | 450 | 500 | 550 | 600 | 650 | 700 | 750 | 800 | 850 |
| Woods EC Twin Box 150 | 0.11 | 0.10 | 0.07 | 0.8 | 0.07 | 0.06 | 0.03 | 0.02 | | | | | | | | | |
| Woods EC Twin Box 200 | 0.20 | 0.19 | 0.18 | 0.16 | 0.15 | 0.13 | 0.20 | 0.10 | 0.08 | 0.06 | 0.03 | 0.025 | | | | | |
| Woods EC Twin Box 250 | 0.38 | 0.35 | 0.35 | 0.32 | 0.31 | 0.27 | 0.26 | 0.22 | 0.20 | 0.15 | 0.133 | 0.01 | | | | | |
| Woods EC Twin Box 315 | 0.76 | 0.72 | 0.7 | 0.67 | 0.65 | 0.62 | 0.6 | 0.56 | 0.53 | 0.50 | 0.48 | 0.42 | 0.37 | 0.31 | 0.27 | 0.20 | 0.08 |
| Woods EC Twin Box 350 | 1.15 | 1.05 | 1.00 | 0.95 | 0.9 | 0.82 | 0.78 | 0.7 | 0.68 | 0.58 | 0.55 | 0.42 | 0.38 | 0.25 | 0.105 | 0.05 | |

| Product Code | M3/s @ Pa (Static) | | | | | | | | | | |
|-----------------------|--------------------|------|------|------|------|------|------|------|-----|------|------|
| | 0 | 100 | 200 | 300 | 400 | 500 | 600 | 700 | 800 | 900 | 1000 |
| Woods EC Twin Box 450 | 1.78 | 0.7 | 1.6 | 1.49 | 1.35 | 1.1 | 0.6 | | | | |
| Woods EC Twin Box 560 | 3.25 | 3.15 | 3.05 | 2.85 | 2.85 | 2.67 | 2.46 | 2.25 | 2.0 | 1.75 | 1.49 |

Product and Electrical Data

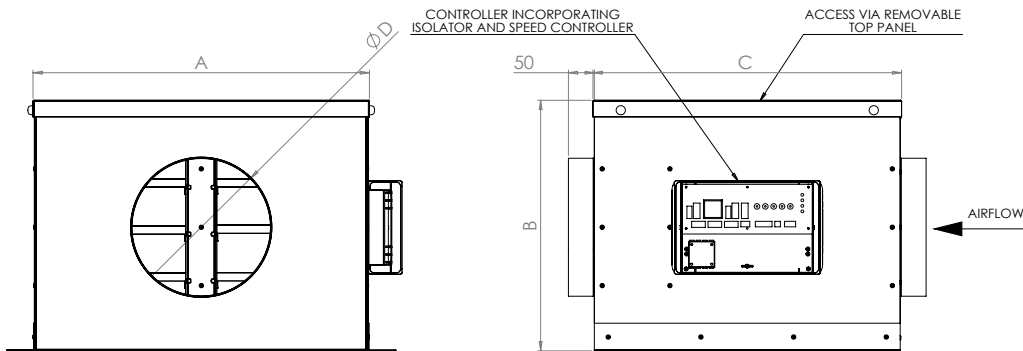
| Product Code | Product Number | Voltage | Motor Frame | Electrical Current | | Full Load Current (A) | Wiring Diagrams | Breakout |
|-----------------------|----------------|---------|-------------|----------------------|------------|-----------------------|-----------------|-------------------------|
| | | | | Electrical Supply | Motor (kW) | | | Sound Level dB(A) (3m)* |
| Woods EC Twin Box 150 | EC150202 | 10 | Integral | 220-240 V/50 Hz/1 Ph | 0.052 | 0.4 | CD4044 | 24 |
| Woods EC Twin Box 200 | EC200202 | 10 | Integral | 220-240 V/50 Hz/1 Ph | 0.07 | 0.55 | CD4044 | 21 |
| Woods EC Twin Box 250 | EC250202 | 10 | Integral | 220-240 V/50 Hz/1 Ph | 0.17 | 1.4 | CD4044 | 24 |
| Woods EC Twin Box 315 | EC315202 | 10 | Integral | 220-240 V/50 Hz/1 Ph | 0.51 | 3.10 | CD4044 | 38 |
| Woods EC Twin Box 350 | EC350202 | 10 | Integral | 220-240 V/50 Hz/1 Ph | 0.45 | 2.9 | CD4044 | 35 |

| Product Code | Product Number | Voltage | Motor Frame | Electrical Current | | Full Load Current (A) | Wiring Diagrams | Breakout |
|-----------------------|----------------|---------|-------------|----------------------|------------|-----------------------|-----------------|-------------------------|
| | | | | Electrical Supply | Motor (kW) | | | Sound Level dB(A) (3m)* |
| Woods EC Twin Box 450 | EC450202 | 10 | Integral | 380-420 V/50 Hz/3 Ph | 1.01 | 1.6 | CD4045 | 32 |
| Woods EC Twin Box 560 | EC560202 | 10 | Integral | 380-420 V/50 Hz/3 Ph | 3.1 | 4.9 | CD4045 | 41 |

* Sound power levels are average dB(A) at 3m distance over sphere, under free field conditions and are presented for comparative purposes only. Values shown are those at the mid-point of the performance curve. For ErP efficiency ratings and grades, please refer to our Fan Selector for more information.

Drawings and Dimensions

EC TWIN FAN - 150, 200, 250, 315, 350, 450 and 560

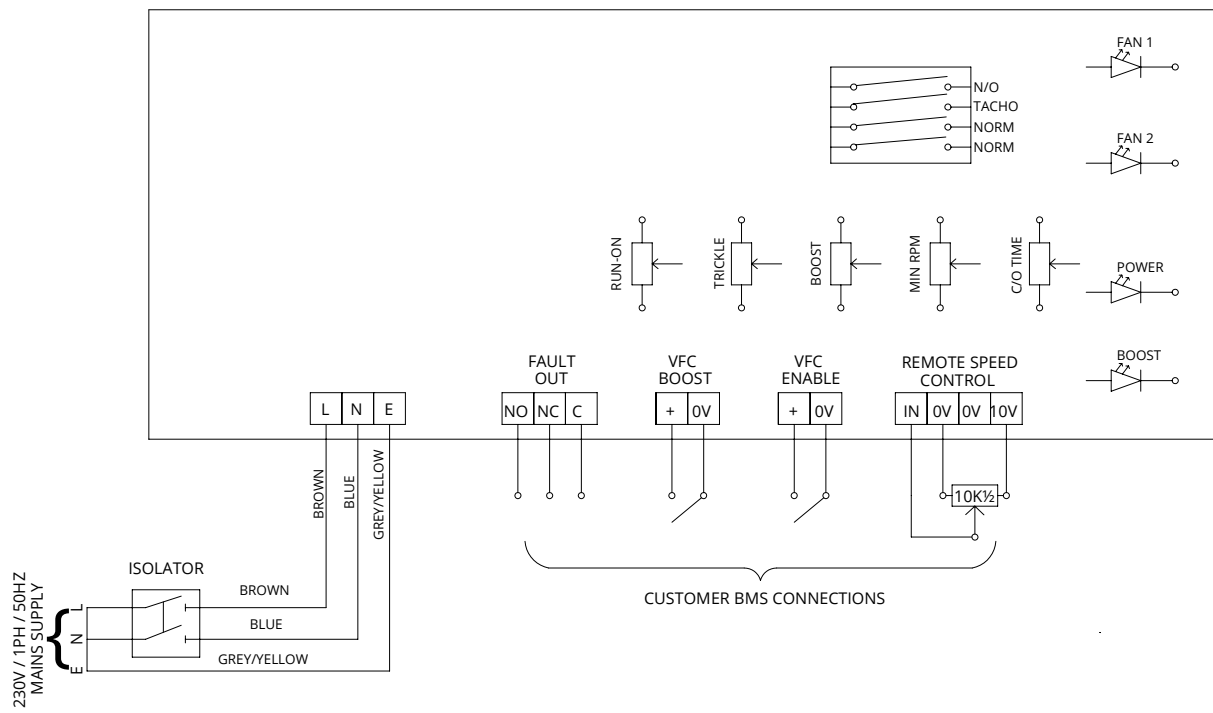


| Size | A | B | C | D | E | Weight in kg |
|----------|------|-----|------|-----|-----|--------------|
| 150 - EC | 450 | 250 | 400 | 150 | 180 | 20 |
| 200 - EC | 450 | 350 | 450 | 200 | 210 | 27 |
| 250 - EC | 600 | 450 | 550 | 250 | 240 | 40 |
| 315 - EC | 850 | 450 | 550 | 250 | 240 | 40 |
| 350 - EC | 950 | 550 | 900 | 350 | 295 | 80 |
| 450 - EC | 1200 | 650 | 1200 | 450 | 350 | 131 |
| 560 - EC | 1500 | 750 | 1500 | 560 | 415 | 217 |

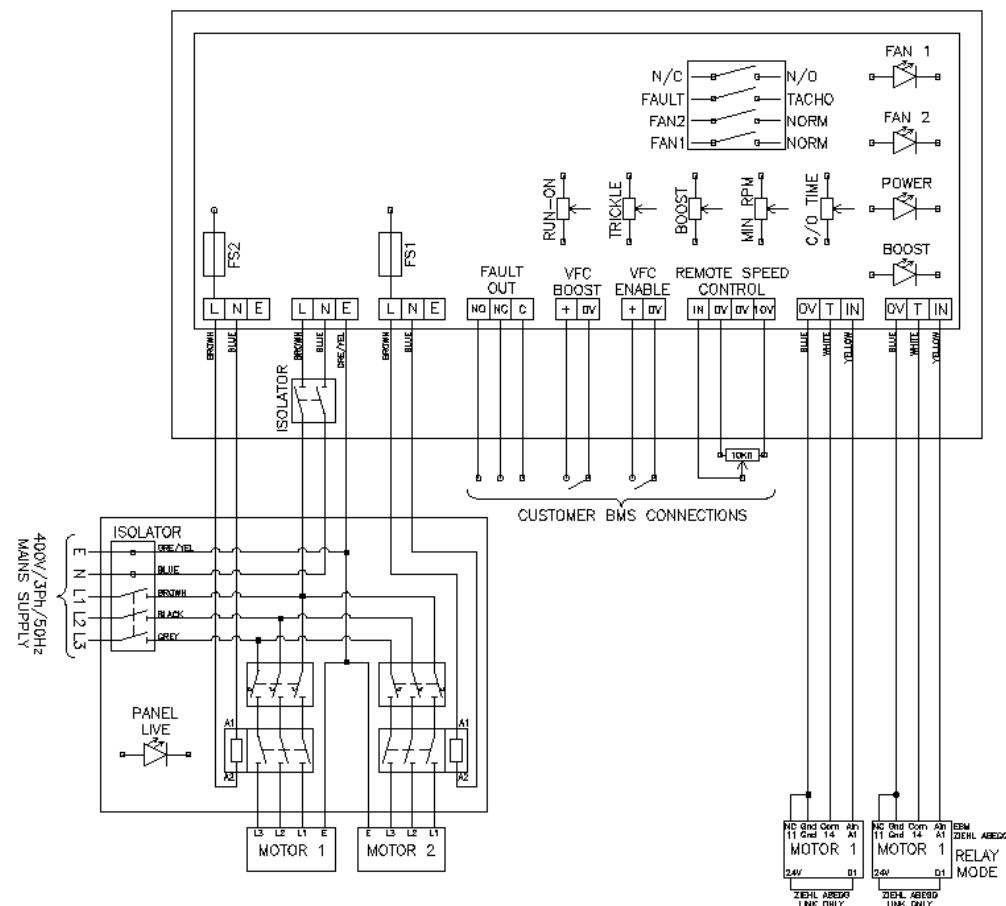
All dimensions shown in mm

WIRING DIAGRAMS

1Phase Wiring Diagram



3 Phase Wiring Diagram





Woods Air Movement Ltd. delivers smart and energy efficient Air Movement and Fire Safety solutions to support every application area. We offer our customers innovative technologies, high quality and outstanding performance supported by more than fifty years of accumulated industry application experience. The widest range of Air Movement and Ventilation products in the market, and strong market presence with over 100 years of experience and manufacturing of products, guarantees that we are always by your side, ready to deliver Excellence in Solutions.

**Contact our friendly sales team today
for more information**

Call: +44 (0) 1206 222 555

Email: quotations.woods@flaktgroup.com

www.woodsairmovement.com

